



Ultrasonic LoRaWAN Waste Bin Accessories



The Ultrasonic LoRaWAN Waste Bin sensor is equipped with a mounting bracket containing both vertical and horizontal mounting options for mounting under a waste bin lid.



The Ultrasonic LoRaWAN Waste Bin sensor is also equipped with an antenna with an SMA RF connector to allow easier installation.

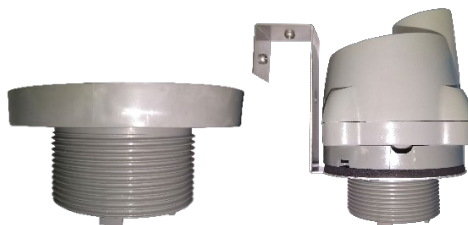


As standard, the Ultrasonic LoRaWAN Waste Bin sensor is equipped with an extended horn adaptor.



The Ultrasonic LoRaWAN Waste Bin sensor can also be equipped with a 2" extended threaded mounting adaptor or with no adaptor.

If required, these options should be specified before shipment of product.



2" extended threaded mounting adaptor



No adaptor



measurement made simple